



Chapter 5000

Logistics

Table of Contents

Section	Page
5000 Logistics	5000-1
5100 Logistics Section Organization.....	5000-1
5110 Logistics Section Planning Cycle Guide	5000-3
5200 Roles and Responsibilities.....	5000-4
5210 Logistics Section Chief Responsibilities	5000-4
5220 Service Branch Director.....	5000-4
5230 Communications Unit Leader.....	5000-4
5240 Medical Unit Leader	5000-4
5250 Food Unit Leader	5000-4
5260 Support Branch Director.....	5000-5
5270 Supply Unit Leader.....	5000-5
5280 Facilities Unit Leader.....	5000-5
5290 Ground Support Unit Leader	5000-5
5300 Communications	5000-5
5400 Area Resources: Infrastructure	5000-5
5410 Incident Facilities.....	5000-5
5420 Area Resources: Personnel and Services.....	5000-6
5430 USCG.....	5000-6
5440 NOAA.....	5000-7
5450 US Navy Supervisor of Salvage	5000-7
5460 EPA Environmental Response Team.....	5000-7
5470 Reserved for Future Use	5000-7
5480 Reserved for Future Use	5000-7
5490 Resource Directory	5000-7
5500 Reserved for Future Use	5000-9
5600 Reserved for Future Use	5000-9
5700 Reserved for Future Use	5000-9
5800 Reserved for Future Use	5000-9
5900 Reserved for Future Use	5000-9
Annex 5000 Area Contact List Links	5000 A-1

5000

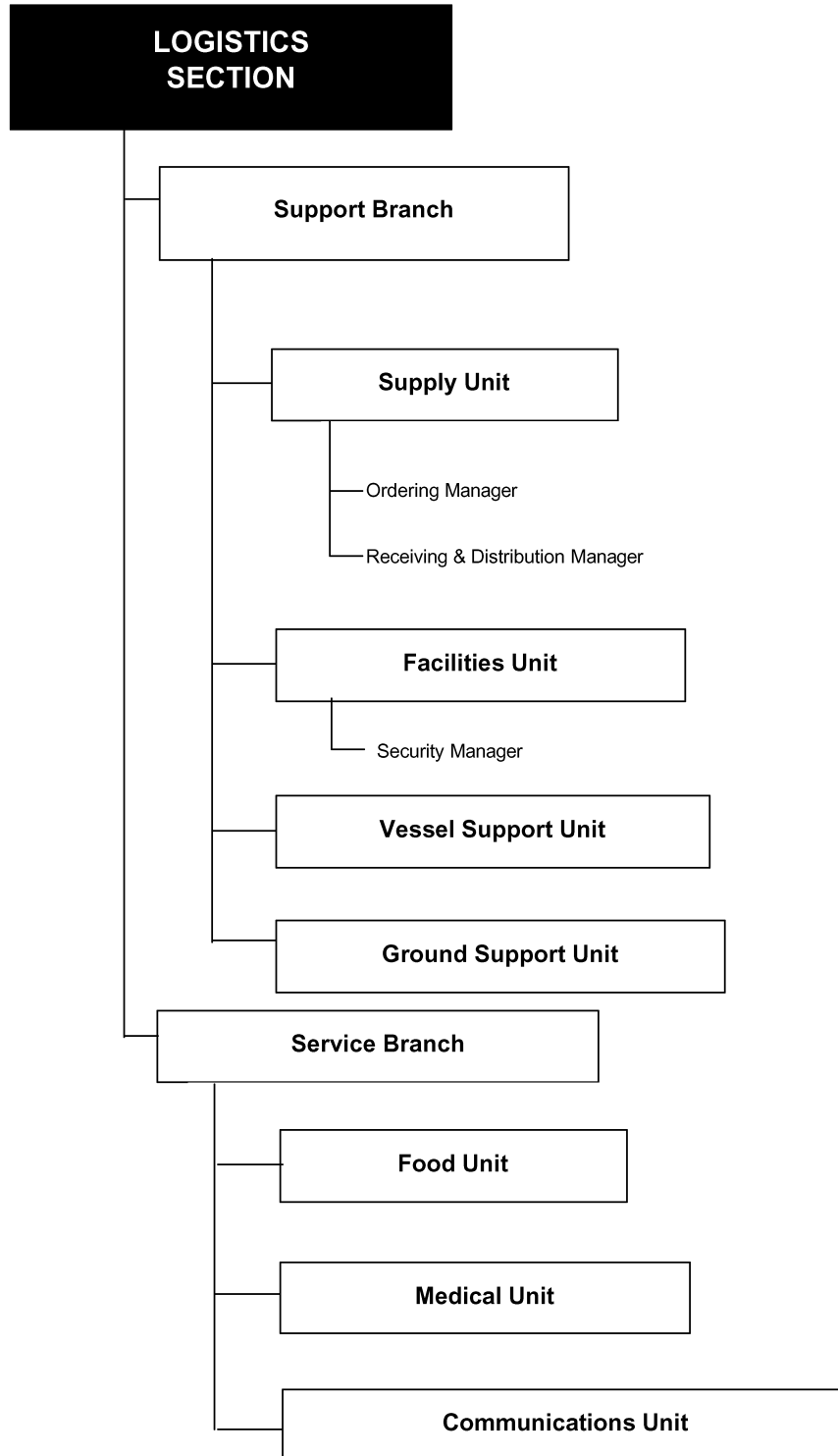
Logistics

5100 Logistics Section Organization

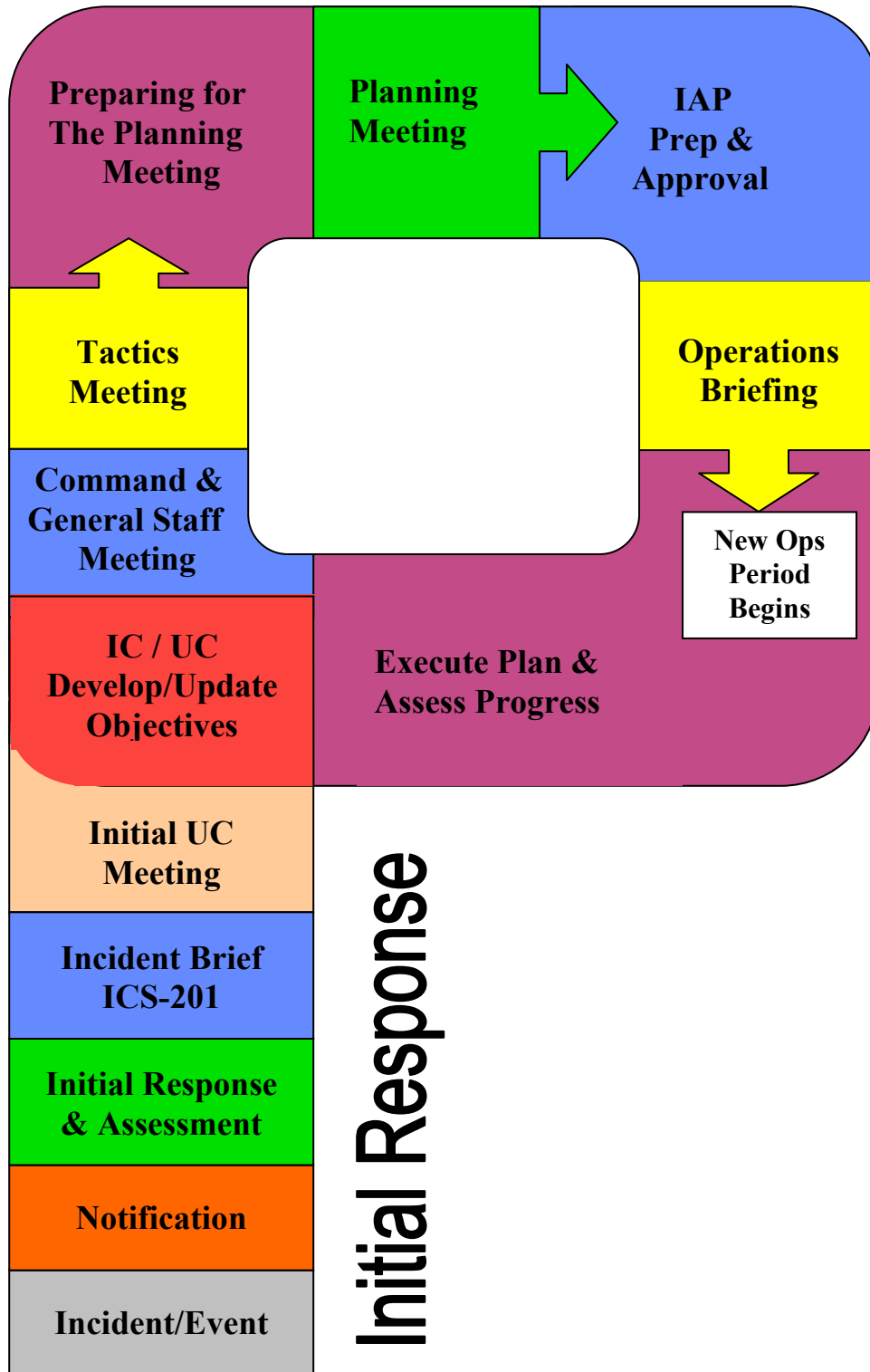
The following is an organizational chart of the Logistics Section and its subordinate units. It serves as an example and is not meant to be all-inclusive. The functions of the Logistics Section must be accomplished during an incident; however, they can be performed by one individual or can be expanded, as needed, into additional organizational units with appropriate delegation of authority.

Information regarding the Logistics Section and Staff positions within the command can be found in Oil Spill Field Operations Guide (FOG) ICS-OS-420-1 dated June 2000. For positions or incident types not addressed by the FOG, refer to the US Coast Guard Incident Management Handbook 2006 Edition, (COMDTPUB P 3120.17A Aug 2006).

LOGISTICS SECTION



Figure



5110 Logistics Section Planning Cycle Guide

5200 Roles and Responsibilities

The Logistics Section is responsible for providing services and support to meet all incident or event needs. This is accomplished under the direction of the Logistics Section Chief. Logistics service and support to an incident or event are important functions. Early recognition of the need for a separate logistics function and section can reduce time and money spent on an incident. All Functions not assigned by the Section Chief remain the responsibility of the Section Chief.

5210 Logistics Section Chief Responsibilities

The Logistics Section Chief, a member of the General Staff, is responsible for providing facilities, services, and material in support of the incident. The Logistics Section Chief participates in development and implementation of the Incident Action Plan and activates and supervises Branches and Units within the Logistics Section.

5220 Service Branch Director

The Service Branch Director, when activated, is under the supervision of the Logistics Section Chief, and is responsible for the management of all service activities at the incident. The Branch Director supervises the operations of the Communications, Medical, and Food Units.

5230 Communications Unit Leader

The Communications Unit Leader, under the direction of the Service Branch Director or Logistics Section Chief is responsible for developing plans for the effective use of incident communications equipment and facilities; installing and testing of communications equipment; supervision of the incident Communications Center; distribution of communications equipment to incident personnel; and the maintenance and repair of communications equipment.

5240 Medical Unit Leader

The Medical Unit Leader, under the direction of the Service Branch Director or Logistics Section Chief, is primarily responsible for the development of the Medical Emergency Plan, obtaining medical aid and transportation for injured and ill incident personnel, and preparation of reports and records. The Medical Unit may also assist Operations in supplying medical care and assistance to civilian casualties at the incident, but is not intended to provide medical services to the public.

5250 Food Unit Leader

The Food Unit Leader, under the direction of the Service Branch Director or Logistics Section Chief, is responsible for determining feeding requirements at all incident facilities; menu planning; determining cooking facilities required; food preparation; serving; providing potable water; and general maintenance of the food service areas.

5260 Support Branch Director

The Support Branch Director, when activated, is under the direction of the Logistics Section Chief, and is responsible for development and implementation of logistics plans in support of the Incident Action Plan, including providing personnel, equipment, facilities, and supplies to support incident operations. The Support Branch Director supervises the operation of the Supply, Facilities, Ground Support and Vessel Support Units.

5270 Supply Unit Leader

The Supply Unit Leader is primarily responsible for ordering personnel, equipment and supplies; receiving, and storing all supplies for the incident; maintaining an inventory of supplies; and servicing non-expendable supplies and equipment.

5280 Facilities Unit Leader

The Facilities Unit Leader is primarily responsible for the layout and activation of incident facilities (e.g. Base, Camp(s) and Incident Command Post). The Facilities Unit provides sleeping and sanitation facilities for incident personnel and manages base and camp operations. Each facility (base or camp) is assigned a manager who reports to the Facilities Unit Leader and is responsible for managing the operation of the facility. The basic functions or activities of the Base and Camp Manager are to provide security service and general maintenance. The Facility Unit Leader reports to the Support Branch Director.

5290 Ground Support Unit Leader

The Ground Support Unit Leader is primarily responsible for 1) support out of service resources 2) coordination of transportation of personnel, supplies, food, and equipment, 3) fueling, service, maintenance and repair of vehicles and other ground support equipment, and 4) implementing the Traffic Plan for the incident.

5300 Communications

This is a frequency and communications resource summary taken from the Communications Manual provided in section 9660 Communications Manual provides further detail on topics such as communications terminology, equipment setup, types of communications systems, and more.

5400 Area Resources: Infrastructure**5410 Incident Facilities**

Designated incident facilities, such as a Command Post (CP), an incident base, or a staging area, may be established based on the requirements of the incident. The Incident Commander or Unified Command determines when these facilities are established and where they are located.

The CP is the location from which all incident operations are directed. Only one CP is required per incident. Government and private entities should be co-located at the CP to make planning and communications easier. The communications center is usually established at the CP. Incident bases(s) are used for large oil

spills affecting a large geographical area and provide staging areas for equipment and personnel (i.e., small craft launching area, shoreline cleanup access point).

5411 Pre-designated Command Post Locations in the Puget Sound Area

In the Puget Sound Area, major metropolitan areas which have been pre-designated for command post locations are:

- Port Angeles
 - (Strait of Juan de Fuca GRP & Outer Coast GRP);
- Bellingham
 - (North Puget Sound/San Juan Islands GRP);
- Anacortes/Mt. Vernon
 - (North Puget Sound/San Juan Islands GRP);
- Everett
 - (North Central Puget Sound GRP);
- Seattle
 - (Central Puget Sound GRP);
- Bremerton
 - (Central Puget Sound GRP); and
- Tacoma
 - (Central Puget Sound GRP).

5412 Pre-designated Command Post Locations in the Portland Area

In the Portland Area, major metropolitan areas which have been pre-designated for command post locations are:

- Portland
 - (Lower Columbia GRP)
- Astoria or Grays Harbor
 - (Grays Harbor GRP)
- Yaquina Bay
 - Northern Oregon Coast GRP)
- Coos Bay
 - (Southern Oregon Coast GRP)

5413 Pre-designated Command Post Locations in the Inland Area

In the Inland Area, major metropolitan areas which have been pre-designated for command post locations are:

- Kennewick
 - (Mid Columbia River GRP)
- Others T5500
 - Area Resources: Response Equipment

5420 Area Resources: Personnel and Services

5430 USCG

5431 USCG National Strike Force

5432 USCG District Response Assist Team

5433 Public Information Assist Team

5434 USCG Reserve

5435 USCG Auxiliary

5436 USCG Vessel Traffic Services

5437 USCG D13 Incident Management Assist Team

5440 NOAA

For more information see: [http://response.restoration.noaa.gov/orr_about_owner.php?RECORD_KEY%28owner_chosen%29=owner_id&owner_id\(owner_chosen\)=2](http://response.restoration.noaa.gov/orr_about_owner.php?RECORD_KEY%28owner_chosen%29=owner_id&owner_id(owner_chosen)=2)

5441 Spill/Discharge Trajectory Modeling

5442 Oceanic and Atmospheric Modeling

5450 US Navy Supervisor of Salvage

For more information see: <http://www.supsalv.org/>

5460 EPA Environmental Response Team

For more information see: <http://www.ert.org/>

5470 Reserved for Future Use

5480 Reserved for Future Use

5490 Resource Directory

For resource list see: <http://www.wrrl.us/>

5491 Oil Response Equipment

See <http://www.wrrl.us/>

5492 Hazardous Substance Response Equipment

See <http://www.wrrl.us/>

5493 Salvage Companies/Divers

For more information see: <http://www.americansalvage.org/members.htm>

5494 Air Support

- Fixed wing
- Helicopter
- Float planes

5494.1 Washington Aerial Support Resources

Kenmore Air Harbor
Kenmore, WA
(425) 486-1257
Fax (425) 485-4774

Worldwind Helicopters
Renton, WA
(425) 271-8441
Fax (425) 271-8442
www.wwheli.com/

Evergreen Helicopters
McMinnville, OR
(503) 472-9361
Fax (503) 472-1048
www.evergreenaviation.com/

Classic Helicopters
Seattle, WA Boeing Field
(206) 767-0515
www.classichelicoptercorp.com

Hillsboro Aviation
Hillsboro, OR
(503) 648-2831
<http://www.hillsboroaviation.com>

Aeroflight Executive Svc Incorporate
Seattle, WA
(206) 763-7842
www.aeroflight.us

Helicopters Northwest
Seattle, WA
(206) 767-0508
www.helicoptersnw.com

Executive Flight Inc.
East Wenatchee, WA
(509) 884-1545
www.execflight.com

5495 Surveillance Capability

- Tracking buoys
- FLIR
- SLIR

5496 Response Management Teams

5497 Safety Resources

- Industrial Hygienists
- Air monitoring

5500 Reserved for Future Use

5600 Reserved for Future Use

5700 Reserved for Future Use

5800 Reserved for Future Use

5900 Reserved for Future Use

Annex 5000

Area Contact List Links

Airports Idaho

<http://www.airnav.com/airports/us/ID>

Airports OR

<http://www.airnav.com/airports/us/OR>

Airports WA

<http://www.airnav.com/airports/us/WA>

Analytical Labs 2002 .pdf WA

<http://www.ecy.wa.gov/programs/eap/labs/search.html>

Analytical Labs OR

<http://www.oregon.gov/DHS/ph/orelap/index.shtml>

Analytical Labs_2001.pdf ID

http://www.deq.state.id.us/water/assist_business/pws/labs_certified.xls

Cities State and Local Government ID

<http://www.statelocalgov.net/state-id.cfm>

Cities State and Local Government OR

<http://www.statelocalgov.net/state-or.cfm>

Cities - State and Local Government WA

<http://www.statelocalgov.net/state-wa.cfm>

Fire Department List WA

<http://www.wsffa.org/links.aspx>

Fisheries Pacific States Marine Fisheries Commission

<http://www.psmfc.org/>

Fisheries West Coast Seafood Processors
http://www.wespa.com/regular_members.htm

Fisheries Pacific Coast Shellfish Growers Association
<http://www.pcsga.net/>

Fisheries Western Fish Boat Owners Assoc
<http://www.wfoa-tuna.org>

Foreign Embassies in the U.S.
<http://www.state.gov/s/cpr/rls/dpl/32122.htm>

Hospitals ID
<http://www.teamiha.org/links.cfm>

Hospitals OR
<http://www.theagapecenter.com/Hospitals/Oregon.html>

Hospitals WA
<http://www.wsha.org/page.cfm?ID=0111>

Marine Exchange of Puget Sound WA
<http://www.marineexchangesea.com/>

Merchants Exchange of Portland, OR
<http://www.pdxmex.com/>

Oil Spill Clean up Contractors Directory ID
<http://www.cleanupoil.com/IDAHO.htm>

Oil Spill Clean up Contractors Directory OR
<http://www.cleanupoil.com/OREGON.htm>

Oil Spill Clean up Contractors Directory WA
<http://www.cleanupoil.com/WASHINGTON.htm>
<http://www.wsmcoop.org/>

Police Links OR
<http://www.policechief.org>
<http://www.oregon.gov/OSP/>

Police Links WA
<http://www.waspc.org/index.php?c=Links>

Police links ID
<http://www.isp.idaho.gov/>
<http://www.usacops.com/id/pollist.html>

Ports Oregon

<http://www.pdxmex.com/index.cfm?fuseaction=pdxmex.links>

Ports WA

<http://www.marineexchange.com>

Tribes ID

<http://www.bauuinstitute.com/Native/Idaho.html>

Tribes OR

<http://www.kstrom.net/isk/maps/or/ormap.html>

Tribes WA

<http://www.kstrom.net/isk/maps/wa/wamap.html>

Wildlife Rescue OR

<http://www.iwrc-online.org/emergency/emergency.html>

<http://www.audubonportland.org/>

Wildlife Rescue WA

Focus Wildlife <http://www.focuswildlife.net/>

Islands' Oil Spill Association <http://iosaonline.org/>

International Bird Rescue <http://www.bird-rescue.org/>

Wildlife Rescue National

<http://www.tristatebird.org/>

<http://www.ibrrc.org/index.html>